



MONTHLY MEMBERSHIP PROGRESS REPORT

District 13 OH2

Results as of: 05/31/2018

GMT: CINDY GREGG

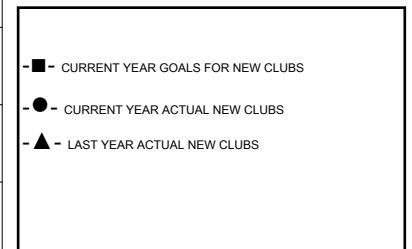
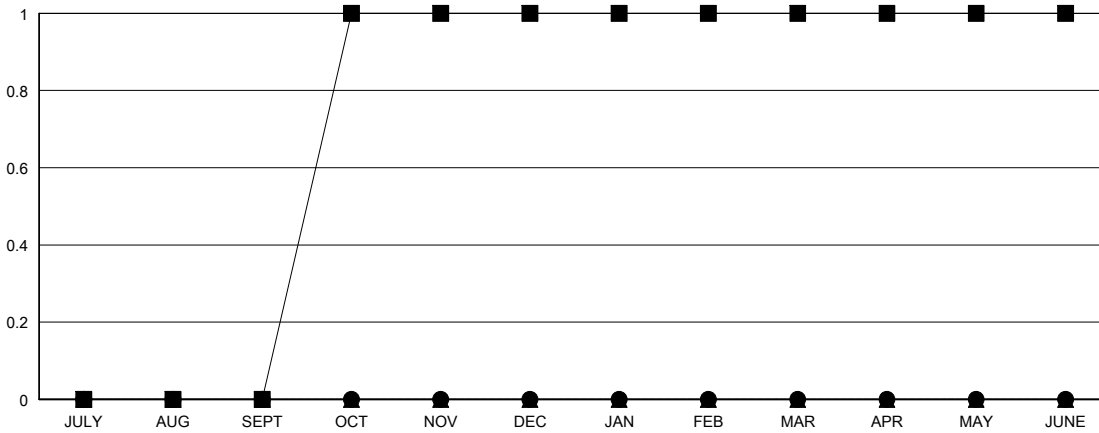
LOCATION OHIO

GMT CA

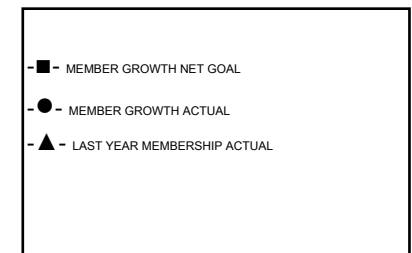
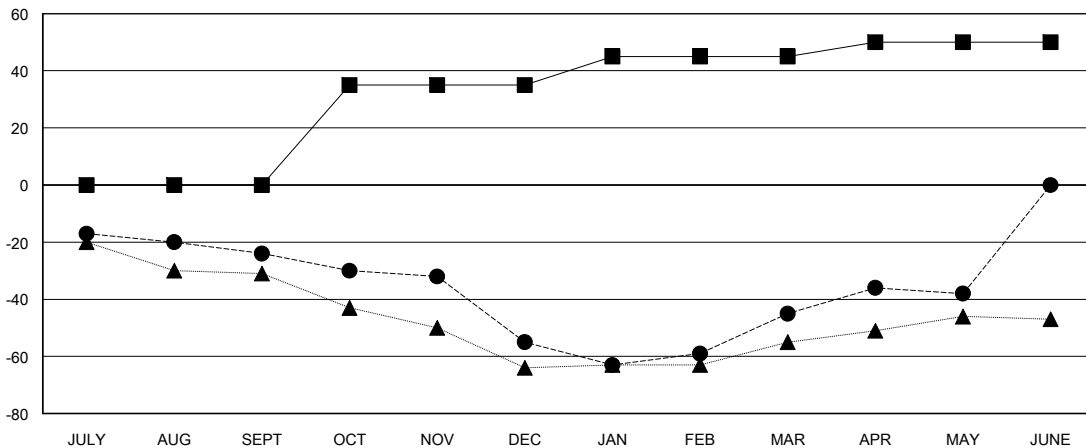
Clubs			
RESULTS FOR 2017-2018			
QUARTER	NEW CLUB GOAL	NEW CLUBS	DROPPED CLUBS
JULY/AUG/SEPT	0	0	0
OCT/NOV/DEC	1	0	0
JAN/FEB/MAR	0	0	1
APR/MAY/JUNE	0	0	0

Members			
RESULTS FOR 2017-2018			
QUARTER	MEMBER GROWTH NET GOAL	MEMBER GROWTH ACTUAL	DROPPED MEMBERS ACTUAL (including transfers)
JULY/AUG/SEPT	0	19	41
OCT/NOV/DEC	35	33	62
JAN/FEB/MAR	10	47	37
APR/MAY/JUNE	5	29	20

GOALS AND ACTUAL NEW CLUBS CUMULATIVE



GOALS AND ACTUAL MEMBERS CUMULATIVE



DROPPED CLUBS: 1

40 CLUBS OF 55 ADDED 1 OR MORE NEW MEMBERS

GENDER DISTRIBUTION	
MALE	1,342 (74.10%)
FEMALE	469 (25.90%)
Women Percentage Fiscal Year Goal: 25%	

DROPPED MEMBERS	
DECEASED	29
CLUB CANCELLED	0
OTHER	131
TOTAL	160

[CLICK HERE FOR CUMULATIVE MEMBERSHIP DATA](#)

TOTAL FAMILY UNIT MEMBERS	350
FAMILY MEMBERS PAYING HALF DUES	177